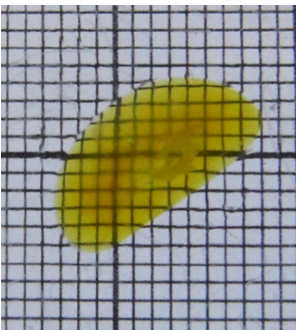
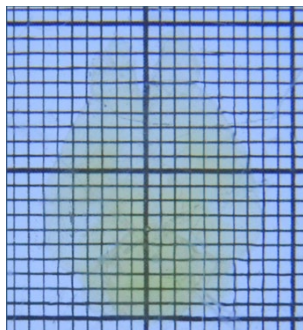


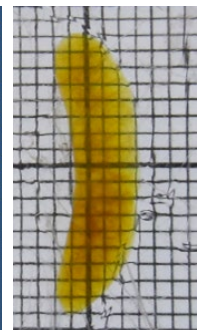
Mouse Intestine
(duodenum)
SC2 ~4 days



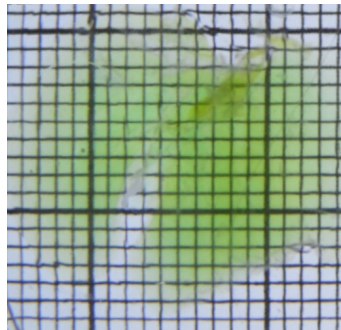
Mouse kidney
SC2 ~ 6 days



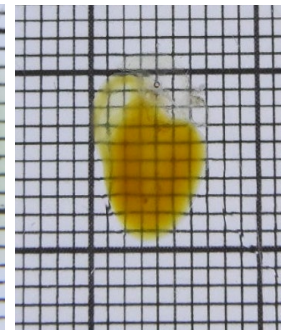
Mouse whole brain
SC2 ~5 days



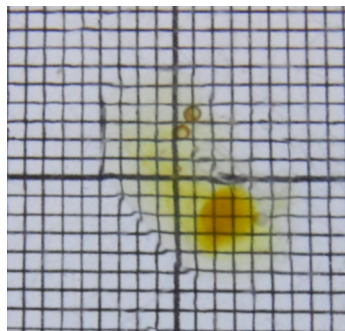
Mouse spleen
SC2 ~10 days



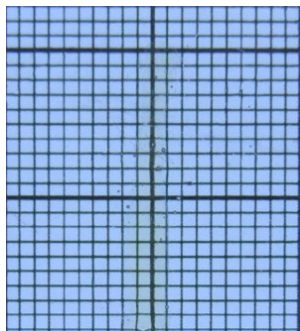
Mouse liver
SC2 ~5-10 days



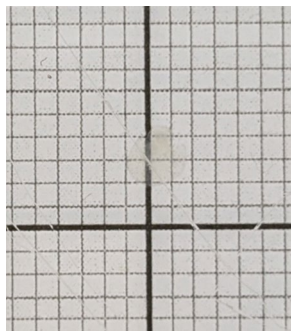
Mouse heart
SC2 ~14 days



Mouse embryo
SC2 ~5 days



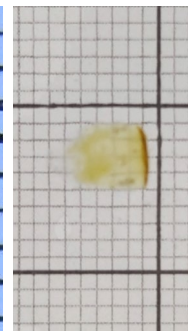
Mouse spinal cord
SC2 ~7 days



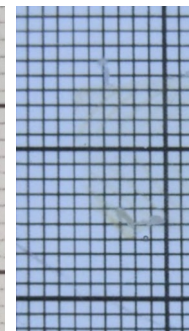
Cerebral organoid
Passive @ 45°C
~4 days



Rat lung
SC2 ~4-8 days



Human skin
SC2 ~4 days



Mouse colon
SC2 ~4 days